



S3D40 Soundbar Quick Start Guide



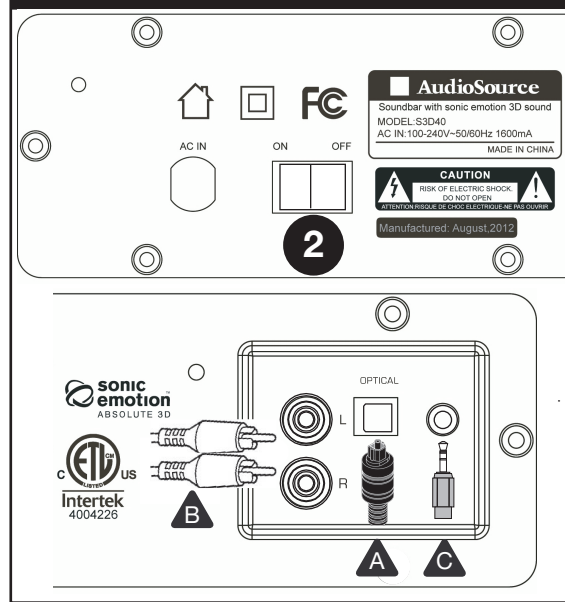
Congratulations on your purchase of the AudioSource® S3D40 Soundbar
The latest in 3D Audio Home Theater technology.

Included in box: S3D40 Sound Bar, Credit Card Style Remote (Battery Included), Product Manual, Quick Start Guide, Input Cable

Installation Sequence

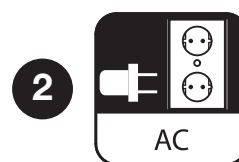
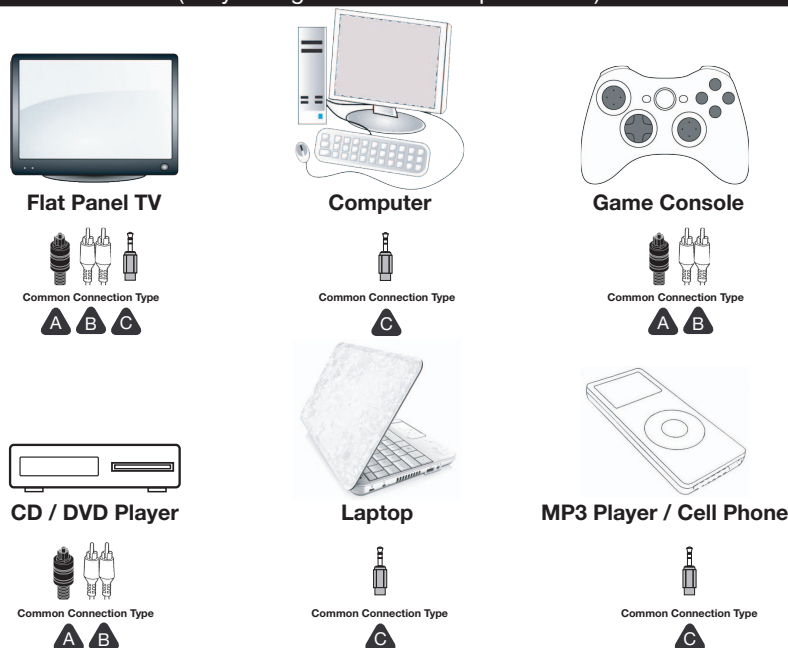
- 1 Connect Source**
A single cable is needed per source.
See table below for common connection types & installation locations.
- 2 Plug power plug into wall outlet**
- 3 Press power button on backpanel to "ON"**
- 4 Press press standby button on top panel**
- 5 Select source**
- 6 Adjust to desired volume**
- 7 Select mode best suited to source**

Rear Panel



1 Compatible Sources

(Only a single cable is used per source)



Front Panel

